



Shipston Forum

The community newsletter for Shipston-on-Stour

January 2015

Crowds flocked to Shipston to enjoy the annual Victorian Evening

Shipston's Victorian Evening, organised by Shipston Rotary, was once again a huge success, attracting hundreds of residents and visitors to the town.

On the 5th December, the town centre was transformed as stallholders, charities and businesses prepared for the official start of the festive season in the town.

The event was opened by Town Crier, Marion Lowe, with the Tree of Life lit soon after by Shipston Rotary president, Judith Slinger. It was then time for champion pumpkin carver, Alex Bradley, to step into the limelight and switch on the town's Christmas lights - his prize for winning the Rotary pumpkin carving competition earlier in the year.

Music was provided by the Town Band, with Shipston Primary School getting the event off to a great start with some beautifully sung carols. Further entertainment was provided by a Ukelele band and Stratford's Shout Choir.

Father Christmas made the most of his substantial grotto, meeting and greeting lots of children to discuss their Christmas wishes.

Meanwhile, over 70 children took up the opportunity to decorate their own gingerbread character at Taste of the Country in what proved to be a multi-coloured icing marathon!

Many of Shipston's town traders entered the annual Christmas Window competition, with some stunning and creative displays. Rightons Butchers won first prize with their festive feast window, with The Bakery second and Ivy Heart, third.

Not only did the event attract record numbers, but stall holders reported a particularly successful night, with charities and businesses alike feeling the benefit.

Shipston Rotary President, Judith Slinger, said: "We were delighted to see so many people enjoying themselves throughout the Victorian Evening. We would like to thank



Crowds flocked to enjoy the evening. Picture by Philip Vial

everyone who supported the event, including all those involved in the planning and those that helped ensure it was a success for the many fund raising organisations attending."

Mayor, Philip Vial, added: "There was a wonderful atmosphere and the weather was reasonably kind which helped make it a great event. On behalf of the town council, I would like to thank Shipston Rotary for all their hard work in organising another successful event which has become the official start of the festive season in Shipston."

Plans are already underway for a number of events in Shipston throughout 2015. Keep an eye on the events calendar on www.shipstononline.org for the latest updates, or follow the town council on facebook at www.facebook.com/shipston.council.

Neighbourhood Plan options emerging

After months of hard work, some initial proposals and recommendations are emerging from the Neighbourhood Plan team.

Turn to pages 9 and 10 for an overview of some of the emerging options for Shipston's plan for the next twenty years.

Keep an eye out for details of future public consultation activities to ensure you have your say on the developing issues and options.



Rightons won first prize for their impressive window display. Photo by Philip Vial



Mayor's column

Firstly I'd like to give my thanks to Shipston on Stour Rotary



Club for organising another brilliant Victorian Evening. Their volunteers make this a perfect start to Christmas in Shipston. Many thanks must also go to them for showing Santa around the town every year!

December was a busy month for me as Mayor and I've attended a number of events including the High School's Enterprise Day and a fund raising concert for the Citizens Advice Bureau. I'd particularly like to thank them for their invitations.

So far we've had a mild winter - but if we have any bad weather over the next month I'd urge you all to keep an eye out for your elderly or vulnerable neighbours.

Many thanks to all of those who attended November's Civic Service, which celebrated our town's volunteers - particularly those managing the food bank.

My congratulations to Alison Henderson, who has rejoined the Town Council after an absence of a few years. You can find out more about Alison on page 3.

I hope everyone enjoyed a great Christmas and I wish you all a Happy New Year.

Special thanks go to all those who worked throughout the festive period providing vital services in and around the town.

Philip Vial

Poppy Appeal raises over £13,500 locally

The Shipston Branch of the Royal British Legion has announced that an impressive £13,644.50 was raised locally for the 2014 Poppy Appeal between 25th October and 9th November.

This magnificent figure, raised in such a short time, is £792 higher than the previous year. Branch Chairman, Richard Adams, said: "The Legion would like to thank everybody in Shipston, Brailes, Cherington, Stourton, Willington, Barcheston, Tidmington, Burmington, Stretton on Fosse, Sutton under Brailes and Winderton for their great generosity in providing the funds to support our Armed Forces and the ex service community, who have served us so well, and deserve help when they need it."

"None of this would be achieved without the collectors who knock on doors, stand in the High Street in Shipston in all weathers and the shops, schools, pubs and businesses who have Poppies available for sale in their premises, so a big thank you to them as well." he added.

For more information about the Poppy Appeal, how the money is spent, or how to volunteer or get involved with the Royal British Legion, please contact Richard Adams on 01608 662328/07961452182 or richardadams5@hotmail.com



Be aware but not alarmed about potential dog theft

Shipston's Safer Neighbourhood Team is encouraging the public to be aware but not alarmed about the risk of dogs being stolen.

Following a couple of first hand reports of people trying to coax dogs into cars, PC Craig Purcell is advising people to make sure their dog is tagged and clearly identifiable. However, he is also keen to reassure residents that despite many comments about dog thefts on social media, there have only been two confirmed cases in the past two years that have been reported to the police.

PC Purcell said: "It is natural for people to be alarmed when they hear stories about dogs being stolen. Thankfully, dog theft is very rare in this area but it is worth dog owners being aware and ensuring that their dog is micro chipped which is the best and quickest way of reuniting a dog with its owner. However, all dogs should also wear a tag with their owners' contact details."

The Dogs Trust is offering free microchipping across the country - to find out where visit www.chipmydog.org.uk/have-your-dog-chipped-for-free/. If you see any suspicious activity, vehicles or people - but not postings on social media - please call the police on 101.

Volunteers needed for new Marie Curie group

A new volunteer Fundraising Group has been formed to cover the North Cotswold area to raise money for Marie Curie Cancer Care.

The new group will raise vital funds so Marie Curie Nurses can continue to provide free care to people with terminal illnesses through supporting Marie Curie's major fundraising campaigns such as the Great Daffodil Appeal and Blooming Great Tea Party, as well as promoting fundraising within the local community. To find out more, please contact: Christine Hale on 01608 661079 or email: christinehale@hale29.fsnet.co.uk



New opening hours for the Minor Injuries unit at the Ellen Badger Hospital

The opening hours of the Minor Injuries Unit at Ellen Badger Hospital have changed. Instead of opening 24 hours, the unit is now open from 8am-8pm. The change has been made based on use of the service, although some concerns have been expressed locally about the reduction in opening hours.

December's hot topics

Concert congratulations: Jackie Warner led the congratulations to Shipston Town Band on an impressive and entertaining Christmas Concert.

Giant potholes: Jackie Warner raised concerns about the depth and size of potholes on Tilemans Lane and Station Road. Chris Saint will raise with Highways.

New grit bin: A new grit bin has been ordered for Berry Close in response to demand from residents and an identified need in the street.

Victorian Evening victory: Ian Cooper led the thanks to Shipston Rotary for putting on another excellent event. Not only that, thanks to some clever coordination, repairs were made to drains in the town centre immediately after the Victorian Evening to take advantage of the existing road closure.

Homeless Heritage Centre: Ronnie Murphy explained that the Co-Op Foodstore is trying to find a new location for the Heritage Centre, previously sited in the post office.

Riverside walk: Warwickshire County Council's Rights of Way team has confirmed that existing rights of way can't be varied. However, the town council could buy/lease/rent the riverbank if landowners were agreeable. Sheelagh Saunders will investigate costs and implications further through the council's solicitor.

Cross with caution: General Purposes Working Group has ordered new signs to be put up when the river floods to make it clear that any vehicles crossing do so at their own risk.

Campaigning for Shipston

New community award: The Shipston Award, which replaces the former Anne Sankey Medal, will recognise members of the public for their voluntary contribution to the community. It will be awarded at the Annual Town Meeting in April 2015. For nomination details, see page 8.

New names for Norgren: New names for the streets in the new Cala Homes development have been agreed at the Town Council meeting and are all based on people associated with the Norgren factory. They are Norgren Crescent, Felton Way, Carr Close, Atcheson Way, Symons Avenue, Sheldon Avenue, Young End and Harris Close.

Town Council business

Proms support: Peter White has joined the Shipston Proms committee.

Funding from developers: Stratford District Council has advised the Sustainability Working Group that it should liaise directly with developers to secure Section 106 money to support infrastructure projects in response to new housing development.

Welcome to new councillor, Alison Henderson

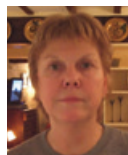
Following a public question and answer session, followed by a secret ballot, Alison Henderson has been co-opted onto the town council. A second candidate was unable to attend due to illness and will be considered at a future meeting.

About Alison Henderson

After a career in international banking, Alison moved to Shipston from London in 2006. She first joined the council in summer 2007.

That July she was a 'flood victim' and had to be rehoused 5 miles away – the experience has made her very sensitive to local environmental issues! Unexpected and time consuming personal commitments forced Alison to step down after an initial busy period as a local councillor, focusing among other things on supporting the Wool Fair and helping to introduce the Italian and French markets to Shipston.

Alison is a member of U3A, a trustee of the Shipston Educational Charity, and an 'L-plated' bell ringer at St Edmund's, among other interests. On her appointment, Alison said: "I'd like to help the push towards a better co-ordinated, more balanced and fair, area-wide approach to new development. I fully support any initiative to encourage small businesses to flourish and grow and I'm keen to support and foster any organisations or initiatives aimed at the greater inclusion and wellbeing of elderly people within the community."



New Clark House Update

Wool Fair update - Shawls for Ethiopia 2015

Shipston Wool Fair is continuing to support patients at the Addis Ababa Hospital in Ethiopia in 2015. We were able to give the Hamlin Fistula Charity a total of 28 blankets at the Wool Fair last year (2014) and are keen to provide further support.



A reminder to all Knitters. The basic needs are 4 ply, knitted squares approx 9ins x 12ins size 4mm or 8 needles, the completed size approx 36 ins by 48ins. This uniform size makes the packaging easier.

The shawls need to be washed frequently so a simple crocheted border or blanket stitch gives more strength to the completed article. We can accept the squares individually, as there are some volunteers who will sew them together for us.

Ronnie Murphy would like to thank everyone who helped last year. We hope we can add to the total in 2015.

For further information regarding the knitting or the work of the charity please contact Ronnie Murphy on 01608 664518 or New Clark House 662180 during office hours.

Happy New Year

On behalf of everyone at Shipston Town Council, we would like to wish you a happy and healthy 2015.

Georgina Beaumont
Town Clerk
01608 662180
clerk@shipstononline.org

Cubs create prayers for Remembrance

Shipston Cubs have been working towards their "My Faith" badges which involves finding out about their own religion, ceremonies and customs. One of the biggest in the calendar is Remembrance Sunday. Because of this the cubs made a visit to St Edmund's and talked to Reverend Coleby about the Remembrance parade and service they took part in in November, to find out what it means and why we do it.



The cubs also wrote their own prayers about Remembrance and what it means to them, some of which are listed below:

Oh mighty Lord, let us get along in the world and have peace forever. Let us regret the world war and all the fighting. Amen

Thank you God for reminding us of the people that fought in the war. Amen

Dear Lord, this very time is a sad time because of all the soldiers who fought in the miserable war and died.

Thank you God for the people who fought for us in wars gone by and present. Help us be strong and courageous in the times of need and when we are down. Amen

Dear God, help us to remember the people that fought and died in the wars. We wouldn't be here today without them. Amen

God, thank you for remembrance day, to remember people who were brave and fought in the war to save our country.

Dear God the father, let us remember the people who fought and died in the war, let us thank how brave they were. Amen

Dear God, we pray for those who served our country, for those who sacrificed themselves for us and for those who fought and died. We pray for peace and harmony for our country and we remember those brave hearted soldiers who fought in the war. Amen

Dear God, I pray to the brave people that went to war, the people that had the guts to fight, the people that lied about their age to save the world, if the people didn't fight, we may not be here today, the people that went to war to save our country and the 200 people of Shipston and only 36 of them survived, that's how sad war is. Amen.

Shipston Scouts celebrate achievements in 2014

Shipston Scouts recently looked back at their achievements in 2014 and made a video to celebrate. Each of the Scouts presented their favourite aspects of scouting to camera and made a video to help recruit others into Scouting. The video was part of their creativity badge and has been posted onto youtube: <http://goo.gl/6EtNY1>



The three scouts in the video, James Muncey, Jamie Pullen and Sam Robinson all achieved the Chief Scout's Award which is the highest award in Scouting, before leaving to join Explorer Scouts in December.

Scout Leader Alistair McQuade said, "James, Jamie and Sam have been with us for four years and have risen through the ranks to be patrol leaders and have been awarded the Chief Scout's Award because of their achievement and dedication to Shipston Scouts. We're sad to see them go, but we're glad that they will be staying in Scouting."

Shipston Scouts now has some places to fill and anyone interested should have a look at the video the Scouts made, or head down for a trial session on Friday nights after 7:30 at the Scout Hut in Shipston.



Shipston Students cut the first turf of the new school building

Two Shipston High School students recently performed a 'turf-cutting' ceremony to celebrate the start of work on the foundations of the school's new, state-of-the-art £1.6M teaching block. The two year 7 students, Oscar and Hope-Sheree, watched over by Olivia in Year 10, dug the first turf for the foundations of the new building.

The new teaching block, which has been funded by Warwickshire County Council, is due to be finished in the summer of 2015 in order to be ready for the start of the new academic year in September. The block will provide six new classrooms, including an up-to-date languages lab, as well as a large resources area, toilets and office accommodation.



Shipston Primary School

Shipston On Stour Primary School



Christmas values make the top of the tree

Wanting to make someone smile, caring for a sibling and hoping that everyone would have something to eat on Christmas Day, were just some of the kind hearted comments that children hung from Shipston Primary's Christmas Values Tree last month.

Inspired by the school's key values of respect, happiness, cooperation, honesty, trust and caring, hundreds of children from Reception to Year 6 took time to decorate and write their own Christmas message.

The Values Christmas Tree, which took pride of place in the school hall, was the brainchild of staff in the Well Being Curriculum Team in the Stour Federation.



Head of Federation Christian Hilton said: "Everyone has been deeply humbled by the children's overwhelming and heartfelt response. I think the Values Tree demonstrates that no pupil is too young to think of others at Christmas time and we hope these values will carry the children 365 days a year."

School receives E-Safety Award

Shipston Primary School has been awarded the prestigious 360° E-Safety Mark for the way it protects pupils online.

The highly respected award is a national recognition of good practice. Rather than just focusing on technical solutions, the 360° E-Safety Mark integrates e-safety into the curriculum, challenging staff to think about its provision and continual development.

The school was required to reach a series of benchmark levels before an independent assessor verified the evidence. Jane Key from the local authority carried out a rigorous review of the school's e-safety provision, policies and support. Her assessment involved speaking to school staff, parents and carers, governors and pupils and she was delighted to find that the school provides a high level of protection and education for users of new technologies.

Teacher and E-Safety Coordinator, Miss Partridge, said: "Keeping children safe online in school and at home is of paramount importance. We are particularly proud of our e-safety reps from across all year groups, who have played a part in achieving this important award."



Shipston High School

Royal Shakespeare Company to make return visit

The High School is greatly honoured to be invited to host both the dress rehearsal and opening two performances of the Royal Shakespeare Company's new 'First Encounter' production of Henry V in June 2015. The invitation came on the back of the Company's previous visit to the school when they staged two performances of The Taming of the Shrew.

The technical support was provided by the 'Backstage Crew' which is an after school club formed and run by students. The group has obtained funding from both the school and its parents' organisation to purchase equipment and its members help out at all school events, even at times staying behind to the late hours of the evening to move staging or to set up lighting for a new show. The RSC was so impressed by the group that it arranged a very special, one-off tour of the backstage areas at their theatre in Stratford, just for them!



The school is delighted to be invited to host the first days of the new show but most of the credit must go to the members of the Backstage Crew who, during the last RSC visit, amazed everyone with their initiative, hard-work and fantastic enthusiasm. The performances are scheduled for 2nd June. Details explaining how to book tickets will be published soon.

A Dickens of a show at Shipston!

Early in December, students in Year 8 at the High School were entertained with a live rendition of Dickens' A Christmas Carol by professional actor, James Hornsby. For his one-man show James swapped his usual day job of acting in television shows to take on the larger-than-life persona and dress of Charles Dickens and to entertain his audience with a dramatic reading from memory of Dickens' entire story.

The Year 8 students, who are studying Dickens, were totally transfixed for the entire 80-minute show as they were transported into the world of Victorian London. None of them could have imagined it possible in a world of blockbuster films with CGI effects that one man on his own could bring a whole world to life but James certainly showed them how to do it.

Special thanks go to Ilmington Village Hall Committee who put the school in touch with James prior to him performing there in the run-up to Christmas.



Shipston Town Band concert draws the crowds

People of all ages flocked to the Townsend Hall to enjoy Shipston Town Band's annual Christmas concert in December.

The event, which featured a number of lively Christmas tunes, carols, and impressive solo pieces, kept the audience fully entertained from start to finish. The music was interspersed with humorous and thought-provoking readings, expertly delivered by Anne Hume.

Shipston's Junior Band performed three numbers at the concert to the delight of all present, demonstrating that the town's band is attracting and training musicians of all ages.

Conductor and master of ceremonies, Howard Gibbs, ensured the evening flowed smoothly with plenty of laughs along the way, but perhaps the trickiest task was left to Charlie Cox. Charlie was in charge of organising the audience into a highly participative rendition of the Music Man, which proved highly entertaining and exhausting in equal measure.

Deputy Mayor, Jackie Warner, said: "I would like to congratulate the Town Band on a tremendous performance.



Photo courtesy of Tim Banks on behalf of Shipston Town Band

"I'm already looking forward to the next one!"

For more information about the band, visit <http://shipstonband.co.uk/website/Welcome.html>.

Shipston Proms needs you!

Do you love the Shipston Proms? Are you looking for a challenge for the new year? Then you could be just the person to answer an urgent call for support to keep the Shipston Proms alive!



*The small but enthusiastic Shipston Proms Committee.
Photo by Charlotte Wright*

Despite being the largest and longest-standing event in Shipston, the Proms has traditionally been put together by a remarkably small group of people and we're really keen to encourage more residents to get involved.

The Proms committee is a small dedicated bunch of volunteers who are fully committed to organising the fortnight for the enjoyment of the whole community. However, they have had key members step down, after a considerable number of years so new volunteers are needed, with new ideas.

Fortunately, the team already has a tight programme of events and lots of contacts but they still need the people to make it all happen.

The committee need bar staff, leaflet droppers, raffle organisers, door staff at events and handymen/women to help get equipment to the right places.

They're also keen to have support with publicity and someone who can explore funding routes and grants.

If you can help with any of these tasks or have something else to contribute, please get in touch via the website www.shipstonproms.org, come to a Proms committee meeting, or get in touch via Twitter or Facebook. The Proms team is also keen to hear your suggestions for bands or events for the fortnight.

Newly appointed Proms secretary, Emma-Jane Roberts said "Without more support from residents, there will be no Proms. After sixteen successful years, we would hate to see this event disappear from the town's calendar so if you are interested, now is the time to come forward."

Businesses put students through their paces

Year Seven students at Shipston High School were put through their paces to come up with ideas for setting up their own business during an event in December.

The enterprise day involved students working with local business people to complete an enterprise challenge. The intention was to help students develop effective communication, teamwork, time management, problem solving and presentation skills.

Some of the businesses supporting the event included Genesis DM, Barclays, Commelius, Passage Limited, Cotswold Dragons and Mail on Sunday. Town Mayor, Philip Vial, was also in attendance to hear the students' ideas and to see their work.

At the end of the day, a panel of judges selected the winning team, who had developed the most viable and interesting business plan to set up a new gardening business.



Regular events:

- Mon Citizens Advice Bureau:** Mornings, New Clark House. To book a free appointment, call 01789 200136
- Mon St John's Ambulance:** Badgers, 6-7pm. Cadets 7-8:30pm. Meet at Shipston Fire Station. Contact: Josie Bayliss, 684834
- Mon Shipston Duplicate Bridge Club:** 7pm for 7.15pm, Catholic Church Hall, Darlingscote Rd, Shipston-on-Stour. Call Penny Law 663871
- Tues Stroke Club:** Fortnightly (6, 20) 10am-12pm Scout Hut
- Tues Rhyme time for under 2s:** 10.45am Shipston Library. Free.
- Tues Age Concern Lunch Club at Stour Court.** Contact: Stella 686224
- Tues Silver Surfer Computer Lessons,** Shipston Library 2pm. Booking essential. Contact: 0300 5558171 (also on Thurs)
- Tues Bingo:** Alternate Tuesdays. Doors open 6.30pm. Eyes down 7.30pm. Sheldon Bosley Hub. Contact: 661886
- Tues Shipston on Stour Rotarians:** Halford Bridge Hotel, 7.30pm. Contact Adrian Ramskill 0797 656 6525.
- Weds Coffee at St Edmunds Church.** 10.30am-12pm. All welcome.
- Weds U3A Chicago Bridge:** Social Bridge 2pm-4.30pm, Catholic Church Hall, Darlingscote Road. Contact Roger Smith on 01608 238400.
- Weds Stour Valley Probus:** alternate Wednesdays at 10am, The George in Brailes. Contact: Roger Smith on 01608 238400.
- Thur Shipston Stitchers:** 10am to 3pm, alternate Thursdays.
- Thur Story Stomp:** Shipston Library, 11.30am-12pm.
- Thur Age Concern Lunch Club at Rainbow Fields.** Contact: Diana 01789 740627
- Thur Safer Neighbourhood Team:** Fortnightly. Public surgery, 2.30pm to 3pm. New Clark House, West Street.
- Thur Stour Singers,** open to all, 7.40pm at Shipston Primary School. Contact Yvonne Ridley on 01789 269587.
- Fri Walks over fields** with friendly group. Leaves Old Mill car park at 10am. Contact: Marlene, 663616
- Fri Shipston Probus:** alternate Fridays
- There are lots of regular classes on at the Townsend Hall. Visit www.townsendhall.com or call Lisa Bryan on 07800 771368.**

January Diary

- 3 Shipston Town Council Monthly Litter Pick:** All welcome. Meet at New Clark House, West St at 10am. Contact: Fay Ivens 662133
- 7 Shipston Widows:** Local lunch 12pm. Contact: Barbara Bean 663230
- Shipston-on-Stour Women's Institute:** Call the Midwives by Pat Gould. 7pm, Catholic Church Hall, Darlingscote Road. Contact: Jane Hanks 664519
- 7 Stour Valley Lions Book Sale:** 10am – 4pm. The Coach House, Church Street, Shipston (opposite the Library). To donate books contact Lion David Squires on pinnegards@tiscali.co.uk
- 8 Dementia Workshop for Traders and Businesses:** Does your business come into contact with people with dementia or confusion? If so contact Georgina on 662180 for details and to book. 9.30am-12.30pm
- Royal British Legion – Shipston Branch:** Committee Meeting. 7.30pm, New Clark House. Contact: Mike Dobbin 664636
- 9 Stour Valley Lions Book Sale:** 9.30am - 4pm. Details as above.
- Shipston Dementia Cafe:** 2pm-3.30pm, Stour Court, Old Road. Contact: Charmaine Bird 07720 947938
- Stour Valley Lions Rural Cinema:** Pride. See ad on page 8
- 10 Stour Valley Lions Book Sale:** 9.30am-2pm. Details as above.

Mayor's Surgery: 10am, High Street

Stour Valley Wildlife Action Group: See ad on page 11

- 12 Shipston Town Council Monthly Meeting:** 7pm, New Clark House. All welcome. Contact: Georgina Beaumont 662180
- 13 Senior Citizens Action Network Meeting (SCAN):** 10am-11.30am, Townsend Hall, Sheep Street. Free admission, all young-at-heart over 50s welcome. Contact: Jane Pearce 663491
- Stour Valley Lions Monthly Meeting:** 7.30pm, The George Hotel. Visitors welcome. Contact: John Cavana 01295 722287
- 16 Stour Valley Carers Group - Supporting Dementia Carers:** 10.30am-12pm, Ellen Badger Hospital (using the Day Unit entrance). Contact: Carl Watkins 663808 or Lizzy Feather 686013
- Music Society: Piano Duet.** See ad on page 8
- 20 Shipston Arts and Crafts Society:** Members Evening. 7.30pm, Catholic Church Hall. Contact: Penny Law 663871
- 21 Stour Valley Lions Book Sale:** 10am – 4pm. Details as above.
- Shipston Widows:** Join us for a friendly and informal get-together. 10.30am -12pm, Coach & Horses. Contact Barbara Bean, 663230
- 23 Stour Valley Lions Book Sale:** 9.30am - 4pm. Details as above.
- Singing Down Memory Lane:** Details on pg 12. 2pm. Stour Court Community Room, Old Rd. Contact Barbara Smith 662433
- 24 Stour Valley Lions Book Sale:** 9.30am - 2pm. Details as above.
- 27 Multiple Sclerosis Society: 'Drop in' meeting.** 10.30am at the George Hotel. Contact: Ann Bartlett 666161
- U3A Meeting -** see ad on page 8
- 28 Shipston and District Literary Society:** John Lyly by Perry Mills. 7.30pm, The George Hotel. Contact: Helen Marshall 01789 740773
- 29 - 31 Shipston Amateur Dramatics - Beauty & the Beast.** See pg 16



Shipston Library

What's on ...

All

Rhyme Time, every Tuesday 10.45 am -11.15 am
Songs and stories for 0-2 year olds.

Story Stomp every Thursday 11.30-12.00 noon
Stories for the under 5s

Chatterbooks meets monthly on 1st Saturday of the month
10.00am – 11.00 am
(Next meeting is Saturday 7th February 2015)

Reading group for 8-11 year olds. Join us for games, activities, refreshments and the chance to make new friends.

Library Reading Group
Meets 2nd Thursday of the month starting 15th May 7.00 p.m.


Silver Surfers
Computer help for the over 55s Tuesday & Thursday p.m. Booking essential

Library Opening Hours
Mon 9.30 am – 12.30 pm, **Tues** 9.30 am - 12.30 pm &
 1.30 pm-5.30 pm, **Wed** CLOSED, **Thu** 9.30am – 12.30pm & 1.30 pm –
 5.30 pm, **Fri** CLOSED, **Sat** 9.30 am - 12.30pm
 Also open for Police enquiries & Concessionary Travel passes
For more details Tel: 0300 5558171
or drop in, our staff are always happy to help.

Free!








Shipston Music Society
www.shipstonmusic.org.uk

Charles Matthews & Colin Druce



Piano Duet

**In the Methodist Church
New Street, Shipston-on-Stour
@ 7.30pm Friday 16th January 2015**

Guests £6.00 - Students & Under 16 £2 .50
New Members are always welcome


Registered Charity Number: 1146459 (England)

STOUR VALLEY LION'S CINEMA

BILL NIGHY IMELDA STAUNTON DOMINIC WEST PADDY CONSIDINE

**"DON'T TRY TO RESIST.
PRIDE WILL MAKE YOU CHEER!"**
VANITY FAIR

PRIDE



BASED ON THE INSPIRATIONAL TRUE STORY

1984 Margaret Thatcher is in power and the NUM is on strike, prompting a London-based group of gay activists to raise money to support the strikers' families. Initially rebuffed by the Union, the group identifies a tiny mining village in Wales and sets off to help. As the strike drags on, the two groups discover that standing together makes the strongest union of all.

SHIPSTON HIGH SCHOOL
Friday 9th January, 2015 at 7:00 pm
Advance Tickets £3.50 (£4 on door)

From: R. Clarke Electrical, 27 High Street, Shipston On Stour.
: Lion Judith Jackson. Tel: 01608-661148
Interval for Raffle, Refreshments and snacks.
Disabled parking, wheelchair access and toilets



Our next Monthly meeting
Tuesday 27th January at 2 p.m.
in the Townsend Hall

"Frank Muir and Denis Norden"



**An Appreciation of
Two Great Comedy Writers**

Presented by David Howe

Visitors are welcome

Entry and refreshments £2

The Third Age: a time of creativity and fulfilment



The Shipston Award

The Town Council is inviting nominations for the The Shipston Award, which will be awarded annually to recognise voluntary work done by individuals in Shipston-on-Stour. The award replaced the previous Anne Sankey Medal.

The Shipston Award will be presented by the Mayor at the Annual Town Meeting in April 2015.

Nomination forms can be downloaded from shipstononline.org or collected from New Clark House. Nominations can also be made by letter and should include your details, who you are nominating and why.

All nominations must be received by the
28th February 2015 at the following address:

Shipston Town Council, New Clark House, West Street, Shipston-on-Stour CV36 4HD

Emerging themes and ideas:

Shipston's Neighbourhood Plan is taking shape



Shipston's neighbourhood plan
Our town, our plan, our future.

Over the last few months, volunteers have been working hard on pulling together evidence, ideas and proposals to form the basis of the Neighbourhood Plan for Shipston. The purpose of a Neighbourhood Plan is to give communities a greater say in how their area develops, and once adopted, becomes a formal consideration as part of the planning process alongside the Core Strategy and other documents.

The four working groups – housing, economy, environment and infrastructure – have drawn out some emerging themes and ideas ahead of planned consultation in the next few months. These are based on a mixture of feedback from residents and other stakeholder groups, as well as desktop research and fieldwork.

Over the next two months The Forum will be publishing a summary of the current status from each of the working groups, starting this month with housing and environment.

Nothing is set in concrete. The intention is to provoke discussion and interest ahead of a consultation period during which the Neighbourhood Plan team wants your views. Please look out for further updates in the Shipston Forum and online at www.Shipstonnp.org



Housing: What the working group has learnt so far

The population of Shipston in 2011 was 5038, housed in 2405 dwellings. The number of houses in the town doubled between 1981 and 2011 – an average increase of nearly 40 new homes every year. This was the fastest rate of housing development anywhere in Warwickshire: 2½ times the rate of house building in the county as a whole. It is generally agreed that the provision of educational and medical facilities in Shipston, and improvements to the road and public transport systems, has not kept pace with this rapid rate of growth.

Stratford District Council's submitted Core Strategy (which will go through an Examination-in-Public in January) proposes that Shipston should provide 235 of the 11,300 new homes that the Council calculates are needed in the District between 2011 and 2031. However, the actual level of housing growth in Shipston is likely to exceed this figure due to existing applications, permissions and appeals.

If all these schemes (totalling around 660 units) were to go ahead, it is likely that the majority of them would have been completed by 2021. That would mean that Shipston could see a rate of housing development in the current decade averaging over 60 homes a year, far exceeding that of the previous 30 years. In addition, redevelopment and 'windfall' sites are likely to continue to become available within the existing built up area during the plan period, some of which would be most suited to small-scale housing development.

Furthermore, a recent call by the District Council for potential sites for housing development to meet the District's housing needs up to 2031 has resulted in local landowners putting forward 4 additional sites within the Shipston parish boundary which could accommodate up to around 350 further homes.

It is clear that the contribution which Shipston is expected to make towards the District's housing needs between 2011 and 2031 has already been achieved through existing planning

permissions, so there is no strategic need for any further housing permissions to be granted in the town for at least the next decade. But what about meeting local housing needs?

A Housing Needs Survey carried out a year ago showed a current requirement for 26 additional 'affordable' homes: 24 for rent and 2 shared ownership. Outstanding planning permissions will deliver approximately 80 affordable homes, and so current needs identified last year will be more than met. But there will almost certainly continue to be new demands for affordable homes by people with a local connection to Shipston throughout the period to 2031.

On current trends it is possible that by 2021 a third of Shipston's residents will be aged 65+. There is likely to be a need for 'extra care' housing (individual homes with 24-hour on-site care and support) to meet the needs of the town's growing elderly population. The latest estimate by Warwickshire County Council is that there is a current need in Shipston for 69 such units, and new demands for such

accommodation are likely to continue throughout the plan period. No planning permissions have yet been granted for such accommodation, though the proposed development north of Campden Road which is subject to a current appeal would provide 130 extra care dwellings.

According to comments received during the preparation of the Neighbourhood Plan, the overwhelming opinion in the town is that there should be no more large-scale housing developments, and that any further housing construction

If all the current planning applications and outstanding appeals were granted, Shipston could see 660 dwellings built between 2011 and 2021



should not take place until deficiencies in social and physical infrastructure have been remedied. A sizeable number of people believe that there should be no more house-building at all in Shipston during the Plan period.

In the public consultation on the Neighbourhood Plan, which will take place in 2015, options for housing development, predominantly to serve local need during the Plan period up to 2031, will be introduced for comment.

Environment: Improving access to open space

The built and natural environment of Shipston on Stour is arguably its greatest asset. Our surveys show that it is a prime reason why people settle here and stay. The Neighbourhood Plan sets out the environmental policies and frameworks that will preserve, develop, and cherish the place where we live.

High on many residents' priorities will be flood defences. The present work of the Flood Action Group and the Environment Agency will be formalised in the Neighbourhood Plan to ensure that our local needs are fulfilled in the short, medium and long term. In common with national policy, the focus will be on slowing the flow from upstream catchments whilst improving the river's capability to handle peak flows.

The historic centre of the town is a conservation area, but this alone does not guarantee it is impervious to inappropriate development. Gems such as Sheep Street have to co-exist with a desire to have a thriving, busy and working town centre. An aim within the plan is to establish a stronger working relationship with the district council's planning department to ensure there is sensitivity to the detailed requirements that can help protect the embedded character of Shipston. This can range from the architecture and materials used, through to appropriate shop signage, as well as capitalising on established features to meet the needs of residents, visitors and traders.

There is merit in defining the boundaries of the town as we know them to help resist unwanted development. Boundaries are best defined by fixed topographical features that can endure. The most obvious is the River Stour that marks the eastern boundary. To the south we have Pig Brook and on the western flank the 85 metre contour sets the limit. Setting these boundaries would seek to protect the slopes of Hanson and Waddon Hills and to preserve the 'bowl-like' setting of Shipston which is a characteristic of the Feldons. Responses to our surveys indicate how much residents value and enjoy the setting of the town within the surrounding countryside.



For a town of over 5000 inhabitants, we have surprisingly little public open space, (this definition excludes sports fields) with very little possibility of a public park. And yet we are surrounded by beautiful open countryside on the edge of the Cotswolds. The plan

There is merit in defining the boundaries of the town as we know them to help resist unwanted development. Boundaries are best defined by fixed topographical features that can endure.

proposes a much more ambitious approach to opening up this surrounding countryside and realising its amenity value. Rather than hard edges, 'green corridors' need to be allowed into the town and existing PROWs (public rights of way) be made more welcoming. For example, the 'gem' of Hanson Hill and the views from the ridge need to be celebrated. Presently barring the way is the 'green corridor' of the Hanson Track PROW which is all but impassable in places. Within the plan, we are working on defining processes to enhance the access routes to the open countryside and establish new ones, including 'circular walks'.

The plan will also support existing efforts to open the 'green corridor' of the river, giving the initiative the formality necessary to attract project funding from local authorities.

Dedicated areas will be defined for at least one nature reserve (with public access) and one wildlife reserve within the Parish boundaries. In consultation with Warwickshire Wildlife Trust, provisional sites have been identified for these amenity areas which will be outlined in the forthcoming public consultation.

As the housing update shows, the future geographic size of Shipston is unclear. Whatever the outcome of planning applications, it will still take about 30 minutes to walk from south to north and from the High School to housing areas to the south of the town centre. Regrettably even able-bodied residents will consider this too far and resort to their cars, certainly if they have shopping to consider. This is likely to put a further strain on the limited amount of peak time parking availability in the town centre. A review of local transport within the settlement is therefore a key part of the plan, with the emphasis on investment in green options such as cycling and the opening up of new routes where possible.

Many of the requirements for the built and natural environment are already defined in the Town Design Statement which was finalised in 2014 following public consultation. This will form a planning guidance document once approved by the district council.



What next?

This is a summary of some of the environment and housing issues being debated as part of the Neighbourhood Plan. Please look out for the economy and infrastructure group updates next month or join the next Neighbourhood Planning meeting on Tuesday 20th January 2015, 7:30pm, New Clark House. In the meantime, please send comments to np@shipstononline.org

Shipston in Bloom

The Victorian Evening in Shipston-on-Stour held on Friday 5th December and organised by The Rotary Club, proved to be a very rewarding evening for Shipston-in-Bloom. It was a beautiful night with a clear sky and a full moon, and the High Street looked magical when the Christmas lights and the Christmas Tree were illuminated. Who could resist and stay at home on such a night and consequently the High Street and Market Place were jam-packed.

The Shipston-in-Bloom Committee ran their usual raffle stall, which has proved such a success in the past, and we were not disappointed this year. The generosity of Friends and supporters of Shipston-in-Bloom in donating items for the raffle enabled us to offer eleven enticing hampers as prizes and more than 2,500 tickets were sold in two hours! The Evening proved to be a most successful fund raising event and we should like to thank the people of Shipston for their support, not only at the Victorian Evening, but during the past year too. We look forward to helping to make Shipston a town to be proud of in 2015.



Stour Valley Lions

Lion's Cinema

The not to be missed film show on the 9th January is "PRIDE". This film, based on true events, was named best British independent film - see the ad on page 8 for details.

We need New Lions

Our ability to hold fund raising events and carry out physical projects across the community is restricted by the number of members we have. We are appealing for any residents prepared to help us with specific events or tasks to contact any Lion member (see Lion's notice board in The Bury). Your reward is the joy and pleasure you feel in helping your community and its residents.

Lions Donations

In December Stour Valley Lions held a "Meet The Lions" social event. Part of the evening was reserved for a number of local clubs and organizations to give a short talk about their work and collect donations with a combined total of £3000.

Donations were targeted at youth and charities reliant on self funding. These included; Shipston District Girlguiding, Shipston Angling Club, Shipston Educational Charity, Shipston Cancer Research, Shipston Home Nursing and Zoe's Place (terminal care for 0 to 5 years children) and Warwickshire Air Ambulance.



Shipston Stroke Support Group

Shipston Stroke Support Group were delighted to invite and entertain Mrs Frances French to our annual Christmas meeting lunch.

Frances is the President of the League of Friends Charity that does so much wonderful work for groups like our

own in Shipston. Without the League of Friends and their supporters our group would struggle, so we are most grateful to them. Frances spoke to us as a group and individually about the charity and was absolutely fascinating.

We meet at the new Scout Hut. Our own Neuro-physio, Mr Andrew Telford, develops individual exercise sessions to cater for different stages of recovery. Finally, thank you to our new volunteers Penny and Peter who have added such a new and pleasant dynamic to our fortnightly meetings.

Shipston Probus

Gerald Lesinski, the Master of Lord Leycester Hospital is always entertaining, having spent a varied career in the Grenadier Guards rising from the ranks and retiring as a Lt. Colonel. On the 26th October, he spoke about his part in four public ceremonies - a State Visit, a State Opening of Parliament, Trooping the Colour and a Garter Ceremony at Windsor Castle.

All of them were not without humour. One occurred at Windsor where he stood on the Duke of Edinburgh's cloak. Needless to say, the Duke was not amused.

On 7th November, Ron Gallivan spoke about the Sherman Tank. It evolved in America early in the war and with many improvements was by no means perfect and was no match for the more advanced German tanks.

It was initially produced with only one escape hatch, an example of the lack of American expertise in tank design. However, 50,000 were manufactured, so it scored by sheer weight of numbers!



STOUR VALLEY WILDLIFE ACTION GROUP
PRESENTS
A Lecture
ON BARN OWLS
 BY LEADING BARN OWL SPECIALIST
COLIN SHAWYER
 MUniv AUH FSB CBiol FCIEEM

Invitation

On,
Saturday 10th January 2015 at 2pm.
 At,
**The Catholic Hall, Darlingscote Rd,
 Shipston on Stour
 CV364DR**

Itinerary
 Introduction
 Lecture
 Refreshments
 Raffle

R.S.V.P. To info-svwag@tiscali.co.uk
 By 1st January 2015 with number of persons attending to allow for catering.

**FOR FURTHER DETAILS PLEASE SEE OUR
 WEBSITE NEWS PAGE!**

FREE ENTRY. DONATIONS WELCOME
Nest Boxes are all checked right across the Stour Area several times throughout the year and are managed by our B.T.O. licensed team on a voluntary basis. All donations are always gratefully received to assist with the project.
www.stourvalleywildlifeactiongroup.org

Dementia Friendly Shipston



Regular readers of the Forum will be familiar with the reports from the Dementia Café and the one in November's issue outlined the benefits of attending the free monthly meetings. Membership of the Alzheimer's Society is not necessary and anyone with a diagnosis of dementia and their carer, from Shipston and the surrounding communities, is welcome.

The first meeting of 2015 will be on Friday, 9th January at the usual time and place: 2pm to 3.30pm at Stour Court Community Lounge, Old Road, Shipston. Charmaine Bird will be giving us a presentation about the Alzheimer's Society and how you can benefit from its free services, in particular the Dementia Support Workers. As usual there will be an opportunity to socialise with people who understand your experience.

Contact Charmaine Bird (07720 947938) or local volunteer Barbara Smith (01608 662433).

Stour Valley Carers Group provides support and friendship to the carers of people with dementia in the Shipston area and surrounding villages. It is an informal, drop-in monthly support group held on the 3rd Friday of every month from 10.30 – 12.00 noon at the Ellen Badger Hospital using the Day Unit entrance. The group is supported by the Alzheimer's Society and Guideposts Trust. Please feel free to call in at any time. Any discussions that take place are entirely confidential within the group. The next meeting is on 16th January when a representative from Citizens Advice Bureau is coming to talk to us.

For more information please contact Carl Watkins on 01608 663808 or Lizzy Feather on 01608 686013. You will be made very welcome.

Singing Down Memory Lane is an activity which grew out of the popularity of the Singing for the Brain sessions at the Dementia Café and has been running on a monthly basis since June 2014. It is intended for anyone with memory problems as well as those with a diagnosis of dementia and their carers. It's not about being in a choir – you don't have to be a good singer to participate, it's just great fun singing along to some well-known songs with lyrics provided and occasionally using percussion instruments.

'Singing for the Brain' is a registered activity of the Alzheimer's Society but is costly. After some discussion, we are extremely fortunate that Nick Nickerson kindly offered to lead 6 sessions free of charge in 2015 and Andrew Cockerill will provide the remaining sessions on a private basis, thereby reducing the costs. Funds have been offered from the League of Friends of the Shipston on Stour Hospitals, Rotary and Stour Valley Lions, following presentations to them by Dave Hollingworth.

Supported by understanding local volunteers, the sessions are completely free to participants and are held on the third Friday of the month from 2pm to 3.30pm at Stour Court Community Lounge, Old Road, Shipston.

Please note, the January session will be on the 23rd. We look forward to seeing you.

Shipston Arts and Crafts Society

Our November speaker was Mr Roger Butler and the topic Canal History and Heritage. Confounding our expectations, Mr Butler has never worked, lived or holidayed on a canal ever! He obviously has a great knowledge of canals, the environs and industry on canals and the hard working way of life and gave a fascinating and interesting talk.

Mr Butler showed all aspects on beautiful coloured slides – now unusual, but perfect in presentation. The audience sat riveted to their chairs for well past the usual lecture time! Canals are a growing part of leisure pursuits. The work barges now very few, the mills and warehouses on the canal banks either apartments, museums or derelict and another ancient industry lost.

Mr Butler is a professional lecturer and is a Fellow of the Royal Geographical Society and a Licentiate of the Royal Photographic Society. He lectures all over the UK on many topics with great skill and beautiful photographic images – a speaker well worth a return visit.

20th January is a Members Evening and on 17th February Claire Henley will talk about Children's Illustrations. We meet at 7.30 pm at the Catholic Church hall – visitors welcome.

Shipston Rotarians



Aside from devoting most of our time to organising the Victorian Evening, Shipston Rotarians have supported the Ebola Crisis by collecting at the Waitrose store in Stratford. £1000 was raised which has been sent directly to Médecins Sans Frontières in support of their very courageous work at the heart of the crisis.

At our weekly meetings we have been entertained by interesting speakers covering a wide range of topics including Bee Keeping, Rocketry, Troop Aid and London Livery Companies.

If you would like to find out more about Shipston Rotary please visit our website www.shipstonrotary.org.uk

Shipston Music Society



The Ralph Vaughan Williams Society is a charity dedicated to widening the understanding and appreciation of the music of Ralph Vaughan Williams. Graham Muncy, a founding member and trustee, was well placed to talk about the composer. It was fitting in this centenary year of the outbreak of the First World War that Graham was able to explain the significant effect this had had on Vaughan Williams, his music and compositions at that time.

Having already composed the ever popular "Lark Ascending" in the summer of 1914, which seemed to capture the tranquility of the languid days before the outbreak of the Great War, his world was soon to change quite dramatically. At the age of 44 in November 1914 he chose to enlist as a private in the Royal Army Medical corps signing up for a 4-year tour of duty.

What he saw had a profound effect on him and his music and Graham played several extracts from compositions reflecting the more sombre mood existing in the country at that time.

Graham went on to explain that RVW's music had been largely ignored since his death in August 1958 and the Society was formed in 1994 to ensure his legacy as a quintessential English composer was not forgotten.

For details of the next meeting, see the ad on page 8.

Stour Valley Visually Impaired Club

The V.I.P. Club had a very good year. Sadly we lost one of our devoted members and Gladys is moving to be near her daughter. Otherwise our numbers have increased as our members can bring along a friend.

We have had many interesting speakers mainly from the local area: Working with the Custom and Excise to make a TV programme, the interesting life of the Town Crier and her husband, Prison Visiting, Pounding the Beat, What do I do in the Daytime and musical entertainment. We have also had several lunches out.

We ended the year with a very good Christmas lunch and look forward to an interesting programme in 2015. Any volunteers willing to talk?! Please get in touch with Shirley Pilkington.

Shipston on Stour Women's Institute

The beginning of December saw Shipston's Women's Institute welcome Christmas with a Scottish themed party. Apparently those members who do not possess kilts, sporrans, thistles and tartan scarves, have been clearing the stock of tartan ribbons from the shelves of Shipston's haberdashery in order to gain admittance!

Necessary business was dealt with swiftly when the President reported on a successful outing to the Gloucester Docks and gave details of two proposed visits in the New Year, one to Northamptonshire to see snowdrops in February and a skittles evening in March. The meeting then moved on to the serious business of the evening, mulled wine and delicious nibbles! As everybody always brings a hefty plateful or two, the polite nibbling on a dainty morsel became a hearty supper washed down with glasses of wine. And nothing wrong with that!

The evening was finished off with a game of curling - indoor, not on the icy roads of Shipston. It is a remarkably difficult game to play, especially after all that food and wine. After much laughter the meeting broke up, members wishing each other a Merry Christmas and Happy New Year as they departed.

The next meeting will be at 7pm on 7th January when Pat Gould will be speaking on the subject "Call the Midwives". Visitors and new members are always welcome to the meetings which are held in the Catholic Church Hall, Darlingscote Road.

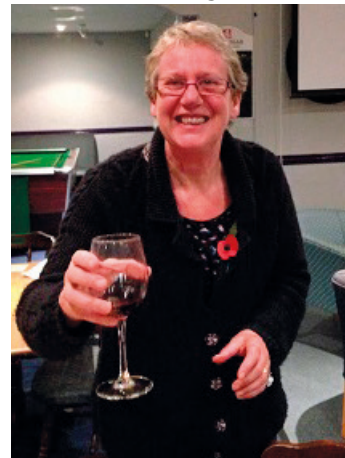


Proud of my town

Cheers to Janet!

Shipston Tennis Club held its Annual General Meeting on Wednesday 5th November 2014. Janet Connor, who has been chairman for the past 18 years, stood down from the post. Everyone at Shipston Tennis Club would like to thank Janet for all her hard work and amazing dedication to the club.

Janet has been a committee member for over 50 years and has ensured that the club is in a healthy, vibrant position going forward. Having helped to secure the funding for the brilliant new Tiger Turf courts, Janet will continue her invaluable work as our new membership secretary and in helping Helen Patrick, her successor as chairman.



Readers' Letters

Letter from Susan Roark

There were two articles in the September issue of the Shipston Forum, to which I have been slow to respond.

The Community First Responders showed us great acts of kindness during my partner's final illness.

Having become ill myself shortly afterwards, I share all of Mr Robbins' praises of Vasa. They even came and fetched me when I was discharged a day early from hospital.

Thirdly, I read in Shipston Home Nursing News that Dr Irvine thought that in future, charities offering hospice at home care would have an even more prominent role to play. Would not it be wonderful if the Stratford Hospice and Shipston Home Nursing could take on an agreed number of Palliative Care beds at the Ellen Badger, providing continuing care and respite care? In the deeds of the Ellen Badger it was written that it should be used in perpetuity for the relief of suffering.

Letter from Brenda Fitch

Shipston is so very lucky to have many interests, which people can enjoy, at every level. Music is just one of those things and Shipston Music Society arranges concerts every month and outings to Stratford, Birmingham and Oxford. We have recently seen Carousel at Oxford Playhouse performed excellently by Oxford Operative Society. A coach picked up guests outside the George Hotel followed by folk from nearby villages. A happy evening was had by all. I look out for outings in 2015.

Something to say?

If you have news to share or want to let us know about someone who you feel should feature in the Proud of My Town Section, please email your suggestions to Forum@Shipstononline.org. Letters and articles may be edited to fit space.

District Council update

Core Strategy

The Core Strategy is in difficulty just weeks before an Inspector begins the process of examining it. The Council has been forced, by new evidence, to increase its housing projections to 11,300 homes over 20 years. Two years ago it wrongly, in my view, rejected similar evidence. This means the Council does not meet the Government's requirement to have a 5-year housing land supply. As a result, it has been unable to effectively defend planning appeals, such as the Norgren site, land next to Hornsby Close and land near Oldbutt Road. Appeal costs have rocketed above £1 million.

The expected date for adoption of the Core Strategy has been delayed until 2016, which could be among the latest in England. In the meantime it is important that we move forward with a Shipston neighbourhood plan.

Supermarket and petrol station

We are edging ever closer to what, I hope, will be a positive Inspector's decision on the proposal for a supermarket and petrol station with extra care housing on the Campden Road. In part this is because the uncertainty over the Core Strategy weakens the council's case. Also, the "spoiler option" of a small Warner Budgens store on Tilemans Lane has been rejected by the Council. Not only would this have led to a loss of jobs on employment land but also, according to an independent report, it would harm retail in the town centre because, unlike a larger supermarket, it would only divert local trade without offering an alternative affordable offer to bring supermarket shopping back to Shipston from Stratford or Banbury. I wish you all a happy and successful 2015.

Councillor Jeff Kenner

Email: jeff.kenner@stratford-dc.gov.uk Tel: 07790 725415

Jeff Kenner & Richard Cheney take it in turns to provide this column.



County Council update

Project Arrow

Two local Fire and Rescue Services (FRS) are about to work together far more closely in a collaborative initiative to save money. Project Arrow is a Joint Project Board that has been set up to create a working alliance between Warwickshire FRS and Hereford and Worcester FRS.



Project Arrow has already highlighted a degree of collaboration in operational cover, water rescue and training. Plans are afoot to extend joint working. Increasingly, two services should be seen as one operational force to the public but they retain their identity for budgets and accountability.

On street parking

A new contractor was appointed by the County Council to deal with on street parking, i.e. ensuring that yellow line markings are correctly observed by all road users. They work in all towns across Warwickshire.

Whilst I have not had any major complaint since they started on 1st November, members of the County Council are watching closely to monitor the enforcement of traffic regulations.

Sent to Coventry?

You may have heard of the debate about Combined Authorities, some of which have been established in city areas in the north of England. Birmingham and the Black Country have cottoned on. They have invited Coventry to join in. Now this could have an impact on Shipston that is part of the Coventry and Warwickshire sub-region.

No decision has been made but meetings have been arranged to establish what may, or may not happen. The County Council is round the table to represent the interests of rural areas.

Councillor Chris Saint

t: 01608 664048 e: christophersaint@warwickshire.gov.uk

Shipston Medical Centre

New Year New You?

The first of January is a time when we traditionally set ourselves New Year resolutions, and often these are around improving our health and fitness.

You may want to stop smoking – it is worth it as not only will your health and general fitness improve but you could also save yourself a packet – the average smoker has 13 cigarettes a day, which works out as 364 cigarettes a month. That's £141 a month and £1,696 a year that you could be saving by not smoking!

The Medical Centre can help support you in giving up smoking. Research shows that you are four times more likely to quit with

Health benefits from giving up smoking

After 2-12 weeks

Your circulation improves.

After 3-9 months

Coughs, wheezing and breathing problems improve as lung function increases by up to 10%.

After 5 years

Risk of heart attacks falls to about half compared with a person who is still smoking

After 10 years

Risk of lung cancer falls to half that of a smoker. Risk of heart attack falls to the same as someone who has never smoked.

support. Ask reception for a smoking cessation pack today.

You may feel that you don't need a new year's resolution, but just fancy a basic MOT instead. If you are aged between 40 and 75 and do not take any medication for cholesterol (a statin) you are entitled to an NHS health check, where we will give you a check up and personalised health advice.

Ellen Badger Minor Injuries Unit

As reported on page 2, South Warwickshire NHS Foundation Trust, which runs the Ellen Badger Hospital has changed the opening hours to 8am until 8pm only. The practice was informed of this decision the day the hours changed, which was 8th December 2014.

Medical Centre – t: 01608 661845

Website: www.shipstonmc.warwickshire.nhs.uk



Shipston Medical Centre

Your Town Councillors



Philip Vial, Town Mayor
Chair of Communications & Planning Groups
 t: 07814 192161
 e: ppjvial@gmail.com



Jackie Warner, Deputy Mayor
 t: 07717 391234



Ian Cooper
Finance Group Chair
 t: 01608 663785
 e: ian@piruk.com



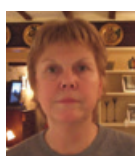
Martin Ferrier
Sustainability Group Chair
 t: 07814 092134
 e: martinferrier4shipston@gmail.com



Arthur Ivens
 t: 01608 662133
 e: fayivens@aol.com



Fay Ivens
General Purposes Group Chair
 t: 01608 662133
 e: fayivens@aol.com



Alison Henderson
 t: 01608 661911
 e: ali.m.henderson@btinternet.com

Shipston-on-Stour Town Council

New Clark House, West Street, Shipston-on-Stour, CV36 4HD

Georgina Beaumont, Town Clerk

t: 01608 662180 e: clerk@shipstononline.org

Something exciting to share?

If you have a story that's relevant to Shipston residents, please contact the editor, Catherine Martin, on 01608 495955 or email: forum@shipstononline.org

Copy deadline: First Wednesday of every month

– but the sooner you can notify the editor of a potential story the better.

Copies of the Talking Shipston Forum can be requested via New Clark House.

Large print copies are available to read at the Library, New Clark House and the Medical Centre.

The Shipston Forum is produced monthly by the Town Council to support the community and is distributed to all households. If you don't receive a copy, please contact the Town Clerk. The Forum can also be downloaded from www.shipstononline.org

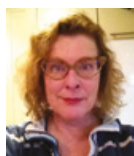
While every effort is made to ensure information is accurate, the Town Council does not accept responsibility for material submitted by readers or third parties and does not endorse any organisation or event publicised. Contributions may be edited to fit available space.



Veronica Murphy
 t: 01608 664518
 e: veronica.murphy123@btinternet.com



Paul Rathkey
Staffing Group Chair
 t: 01608 664141
 e: rathersandco@tiscali.co.uk



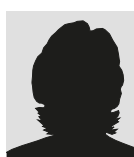
Sheelagh Saunders
 t: 01608 662190/07800 889947
 e: sheelaghsaunders@gmail.com



Dan Scobie
 t: 07771 772511
 e: dan@danscobie.net



Peter White
 t: 07792 507168
 e: pjwhite78@hotmail.com



Vacant

Useful Contacts

Community Links Transport	01789 264491
Shipston Library:	0300 5558171
- 24/7 renewal line	01926 499273
Highways customer services	01926 412515
Severn Trent Emergency Line:	0800 7834444
Shipston Volunteer Transport Scheme	01608 663122
Shipston Leisure Centre	01608 662354
Shipston Medical Centre	01608 661845
– Out of hours	111
Shipston Post Office	01608 661465
Shipston Forum	01608 495955
Shipston Recycling Centre	01926 412593
Stratford District Council	01789 267575
Warwickshire County Council	01926 410410
UCHW Hospital	024 7696 4000
Warwick Hospital	01926 495321
Local police (non emergency)	101
PC Craig Purcell	07977 456585
PCSO Hayley Ditchburn	07879 608696
PCSO Andy Steventon	07966 626908
Churches of Shipston:	
Stour Valley Baptist	01608 664876
Our Lady & St Michael	01608 685259
St Edmund's	01608 661210
Methodist Church	01608 642256

Shipston Amateur Dramatic Society Presents

BEAUTY & THE BEAST

Written by Daniel O'Brien
Directed by Colin Blumhardt

A Pantomime by
Toby Bradford and
Tina Webster

Script provided by
NODA
PANTOMIMES

Townsend Hall, Sheep Street, Shipston-On-Stour
Thursday 29th, Friday 30th and Saturday 31st January 2015 (Matinee on Saturday)

Evening performances commence at 7:30pm
Matinee performance commences at 2:30pm

Tickets

£5 Thursday - All

£8 Friday and Saturday Adults and £5 Children

Available from John Lyne Home Hardware, High Street, Shipston-on-Stour or on the door
All Major Credit Cards accepted.

What's on in Shipston this month? See page 7